

3⁵/₈" X 2⁷/₈" BALUSTER SERIES



Top Rail

R3120T

W 3 5/8" (top)
 W 2 7/8" (bottom)
 H 3 1/8"
 L 120"



Bottom Rail

R3120B

W 2 7/8" (top)
 W 3 5/8" (bottom)
 H 3 1/8"
 L 120"

RIK3000

Rail Installation Kit
 (Sold separately)



NPC6

Peak Post Cap

L 6"
 W 6"
 H 1 3/4"

NP3000

Newell Post

H 48"
 W 5 1/2"
 L 5 1/2"

NIK3000

Newell Installation Kit
 (Sold separately)



B3024

H 24"
 W 2 1/2"
 L 2 1/2"



B3028

H 28"
 W 2 1/2"
 L 2 1/2"



B3032

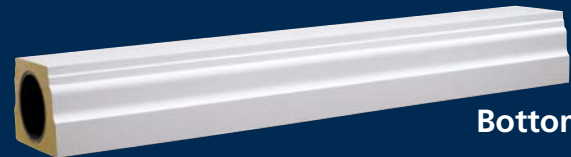
H 32"
 W 2 1/2"
 L 2 1/2"

7" X 5 1/2" BALUSTER COMPONENTS



Top Rail

	L	W (top)	W (bottom)	H
R7096T	96"	7"	5 1/2"	5 1/4"
R7120T	120"	7"	5 1/2"	5 1/4"
R7144T	144"	7"	5 1/2"	5 1/4"



Bottom Rail

	L	W (top)	W (bottom)	H
R7096B	96"	5 1/2"	7"	5 1/2"
R7120B	120"	5 1/2"	7"	5 1/2"
R7144B	144"	5 1/2"	7"	5 1/2"

RIK7000 Rail Installation Kit
(Sold separately)



NPC8
L 8 11/16"
W 8 11/16"
H 1 3/8"



P106
H 8 1/4"
Ball: 5 9/16" dia.
Base: 6 1/8" dia.



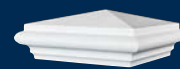
P108
H 10 3/4"
Ball: 8 3/8" dia.
Base: 8 7/8" dia.



P110
H 8"
4" dia.
Base: 3" dia.

NP7000
Newell Post
H 48"
W 7 5/16"
L 7 5/16"

NIK7000 Newell Installation Kit
(Sold separately)



NPCPC8
Fancy Peak Cap
L 8 1/2"
W 8 1/2"
H 4"



NP7001
Panel Newell Post
H 48"
W 8"
L 8"



NP7002
Corner Panel Newell Post
H 48"
W 8"
L 8"

BALUSTERS FOR USE WITH 7" X 5 1/2" COMPONENTS



B7016

H 16"
W 4 1/2"
L 4 1/2"



B7016ES

H 25"
W 4 1/2"
L 4 1/2"



B7019

H 19"
W 5 1/4"
L 5 1/4"



B7020

H 20"
W 4 1/2"
L 4 1/2"



B7020ES

H 32"
W 4 1/2"
L 4 1/2"



B7022

H 22"
W 5 1/4"
L 5 1/4"



B7022ES

H 35"
W 5 1/4"
L 5 1/4"



B7025

H 24 7/8"
W 4 1/2"
L 4 1/2"



B7027

H 27"
Dia 4 3/8"



B7028

H 28"
Dia 5"



B7029

H 28"
W 5"
L 5"



B7029ES

H 36"
W 5"
L 5"



B7031

H 31"
W 5 1/4"
L 5 1/4"



B7032

H 31 3/8"
W 5"
L 5"